



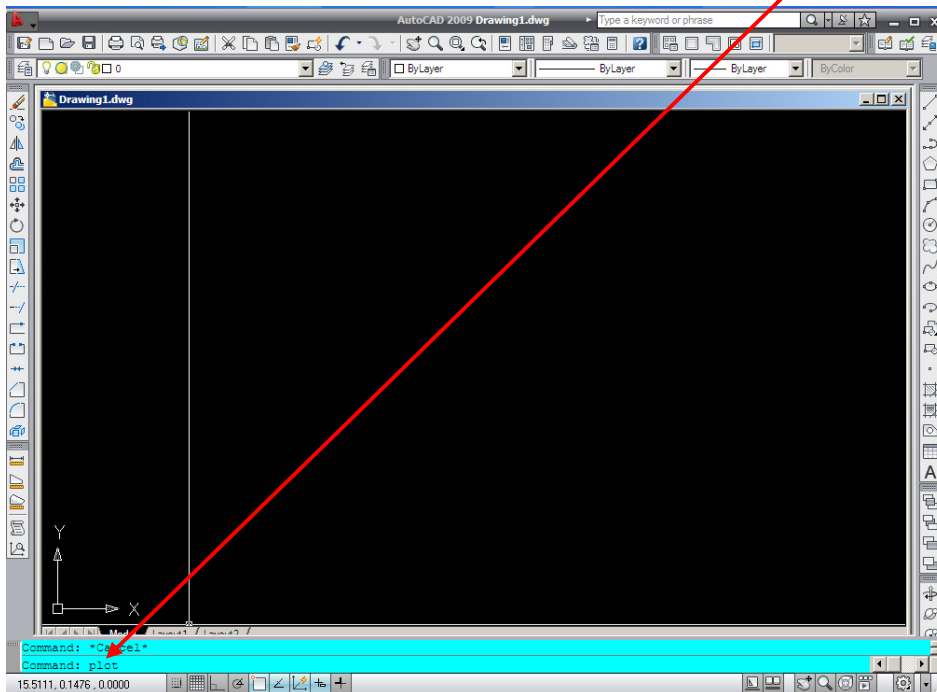
Instructions for Autocad 2010-2012

**HOW TO
CREATE PLOT FILES
IN AUTOCAD
VERSIONS 2010-2012**

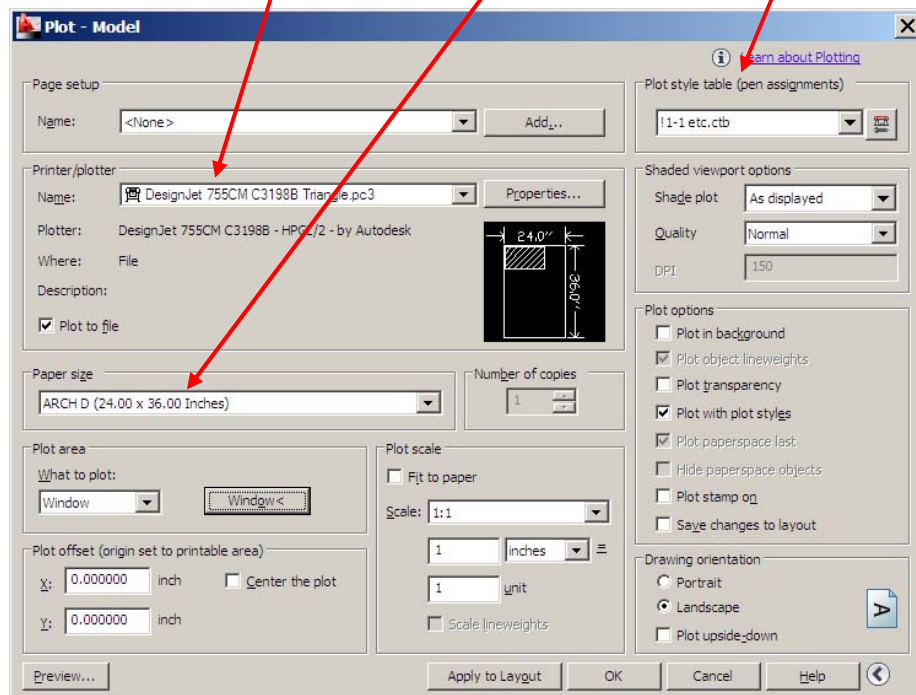


CREATING PLOT FILES IN AUTOCAD 2010-2012

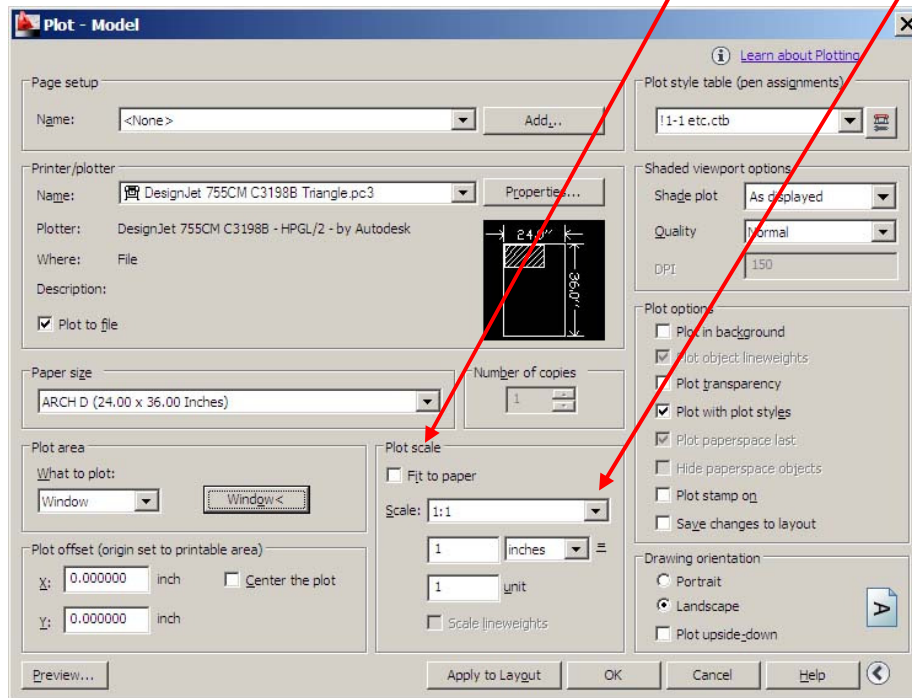
1. TO CREATE A PLOT FILE IN AUTOCAD 2010-2012, OPEN YOUR DRAWING IN AUTOCAD. GO TO THE COMMAND LINE AND TYPE "PLOT" THEN HIT "ENTER".



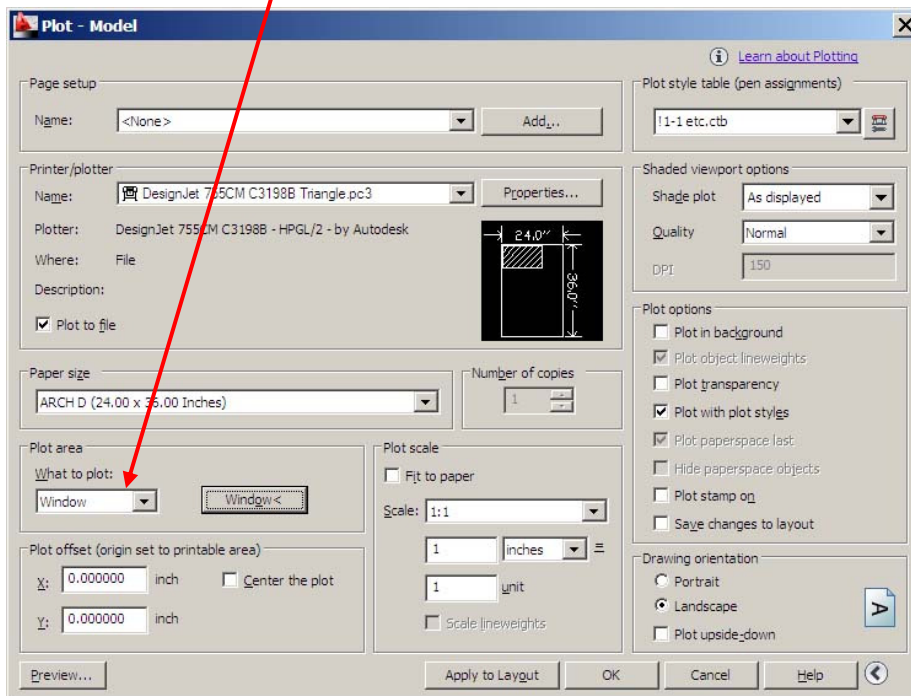
2. SELECT "DESIGNJET 755CM C3198B TRIANGLE.PC3" FROM THE PRINTER/PLOTTER MENU, "PAPER SIZE" FROM THE PAPER SIZE MENU AND CTB (PEN CONFIGURATION FILE) FROM THE "PLOT STYLE MENU".



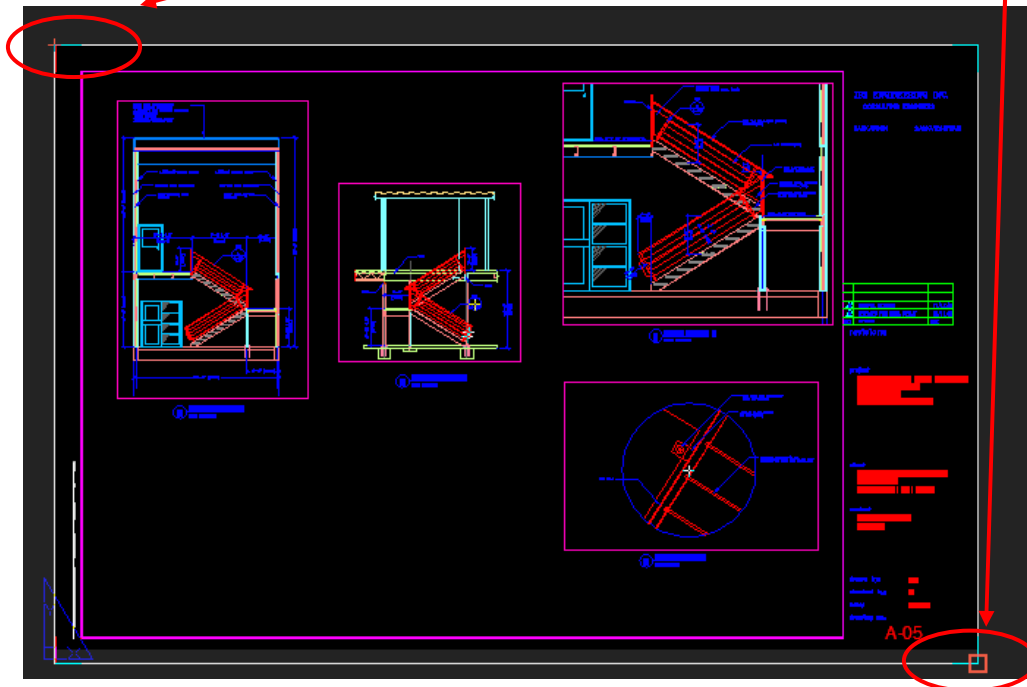
3. NEXT ENTER SCALE OF DRAWING UNDER “PLOT SCALE” USING PULL DOWN MENU. MODEL SPACE REQUIRES ACTUAL DRAWING SCALE, IF PRINTING IN PAPER SPACE, SCALE WILL GENERALLY BE 1:1.



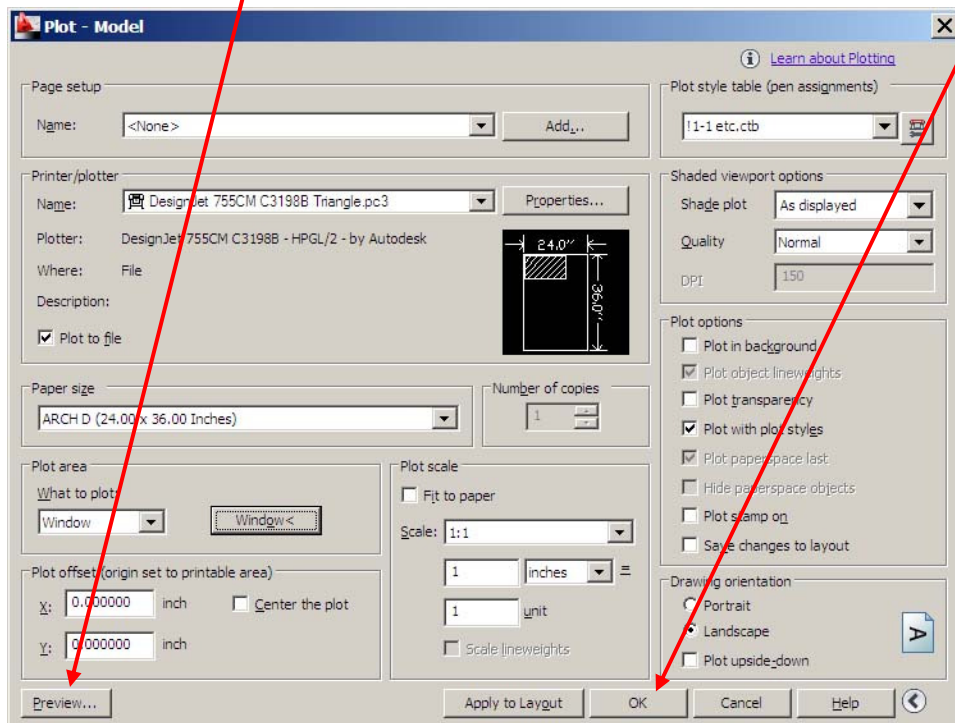
4. SELECT “WINDOW” FROM “WHAT TO PLOT” MENU PULL DOWN.



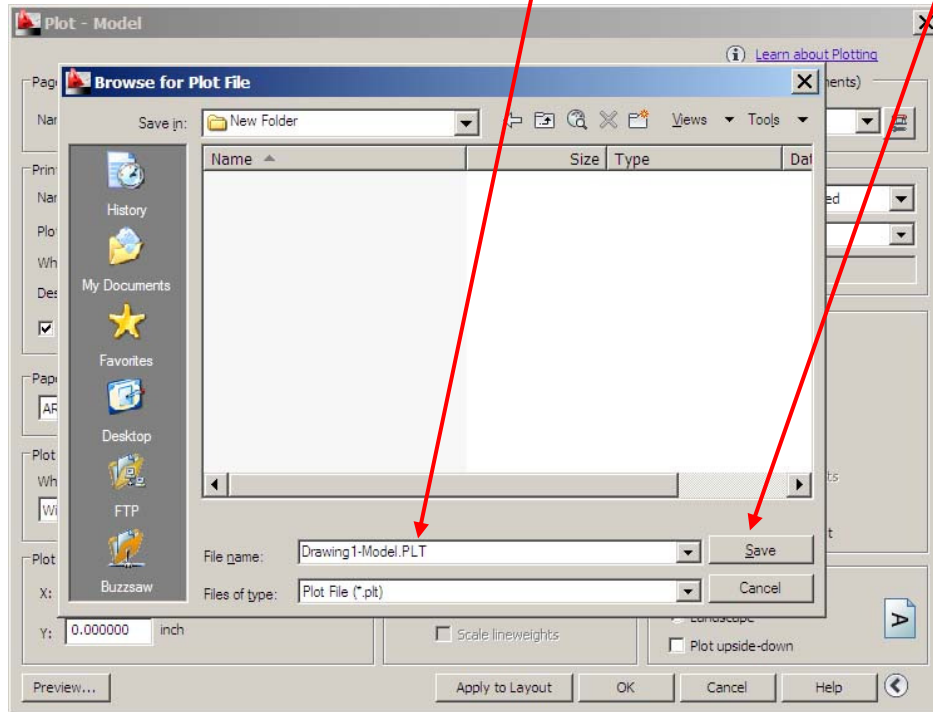
5. DRAW A BOX AROUND DRAWING STARTING IN UPPER LEFT TO LOWER RIGHT CORNER, WHEN BOX IS DRAWN THIS WINDOW WILL CLOSE, AND YOU WILL BE BACK ON THE PLOT DIALOGUE.



6. CLICK THE “PREVIEW” BUTTON (ALWAYS PREVIEW DRAWINGS TO MAKE SURE EVERYTHING IS SET UP PROPERLY) ONCE YOU HAVE VIEWED THE PREVIEW AND DETERMINED THAT SETUP IS CORRECT, HIT “ESC” KEY, SELECT “OK” .



7. WHEN THIS SCREEN APPEARS, BROWSE TO THE DIRECTORY LOCATION YOU WANT TO SAVE THE FILE TO. NAME YOUR PLOT FILE AND CLICK "SAVE", YOU HAVE NOW CREATED A PLOT FILE.



THIS COMPLETES THE PLOT FILE CREATION FOR SUBMISSION TO TRIANGLE REPROGRAPHICS USING AUTOCAD 2010 THROUGH 2012.