



Instructions for Autocad 2000-2004

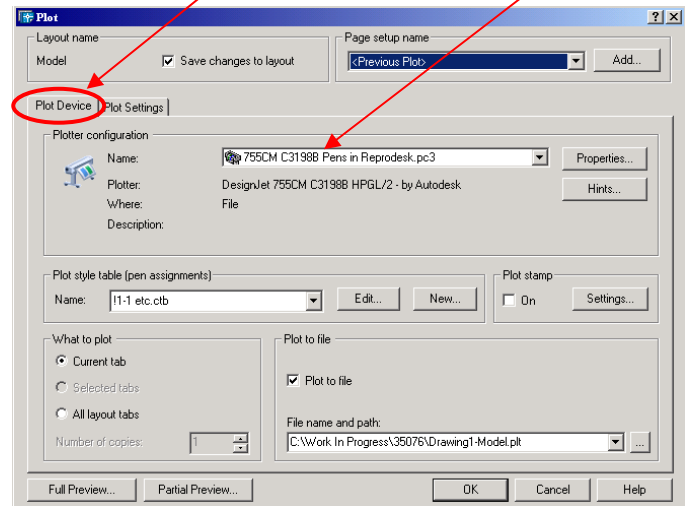
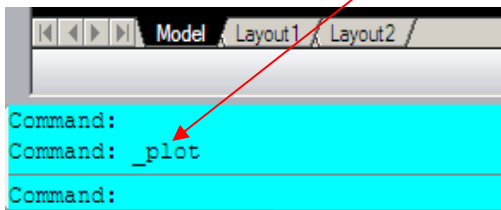
**HOW TO
CREATE PLOT FILES
IN AUTOCAD
VERSIONS 2000-2004**



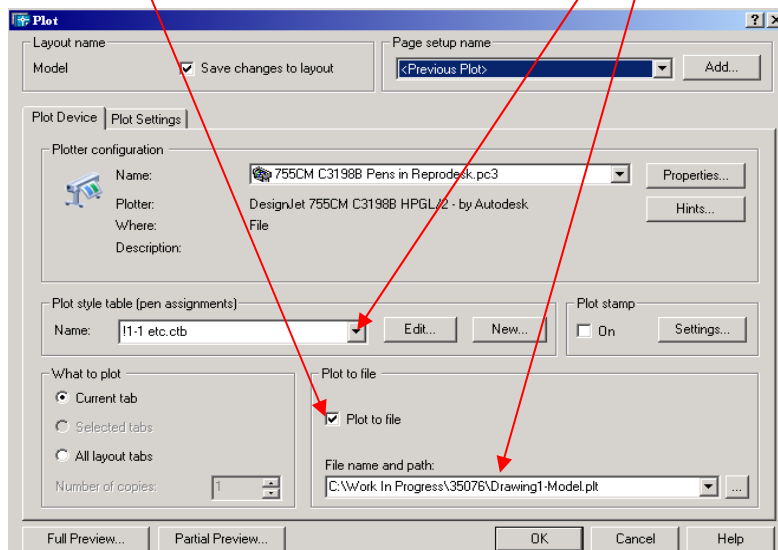
HOW TO MAKE "PLOT FILES" IN AUTOCAD VERSION 2000 THROUGH 2004

FOR PRINTING AT TRIANGLE REPROGRAPHICS INC

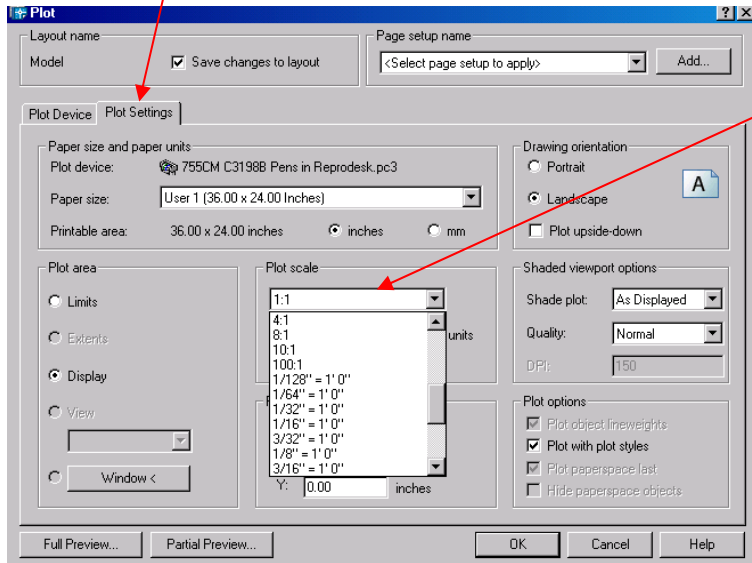
1. ONCE YOU HAVE ADDED THE PLOTTER FROM PREVIOUS INSTRUCTIONS, ("HOW TO ADD A PLOTTER IN AUTOCAD 2000-2004"), YOU ARE READY TO CREATE A PLOT FILE FOR PRINTING.
2. WHEN YOUR FILE IS READY TO PRINT, EITHER TYPE "PLOT" IN THE COMMAND LINE AND HIT ENTER, OR USE THE FILE MENU AND SELECT "PLOT", IN PLOT WINDOW UNDER " PLOT DEVICE TAB", SELECT THE PRINTER YOU LOADED IN STEP 1.



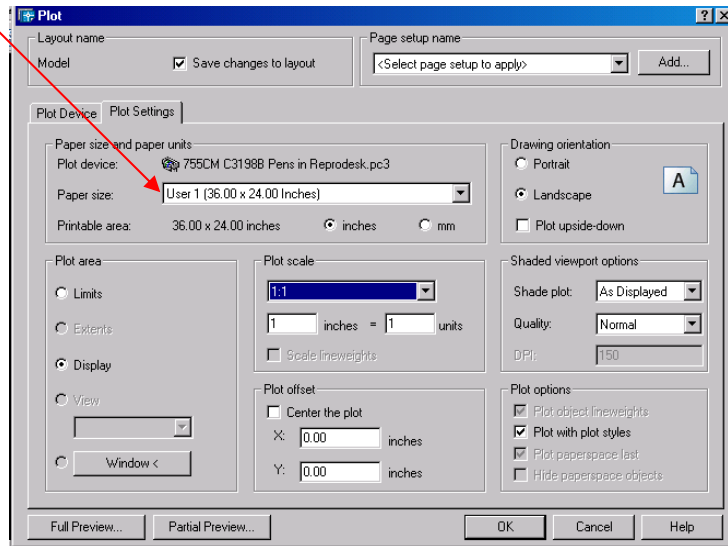
3. STILL ON THE PLOT DEVICE TAB, SELECT YOUR CTB FILE (PEN SET AND PLOT CONFIGURATION), CHECK THE BOX "PLOT TO FILE", AND ENTER THE LOCATION AND NAME OF YOUR FILE.



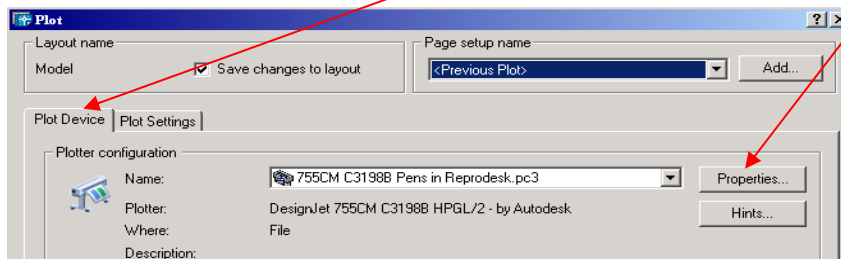
4. GO TO THE PLOT SETTINGS TAB. ONCE THERE, DETERMINE THE SCALE FOR THE DRAWING AND ENTER IT USING THE PULL DOWN MENU. IF YOU ARE USING PAPER SPACE(LAYOUT TABS) YOU WILL PLOT AT 1:1. FOR MODEL SPACE, YOU MUST ENTER THE PROPER SCALE FOR THE DRAWING.



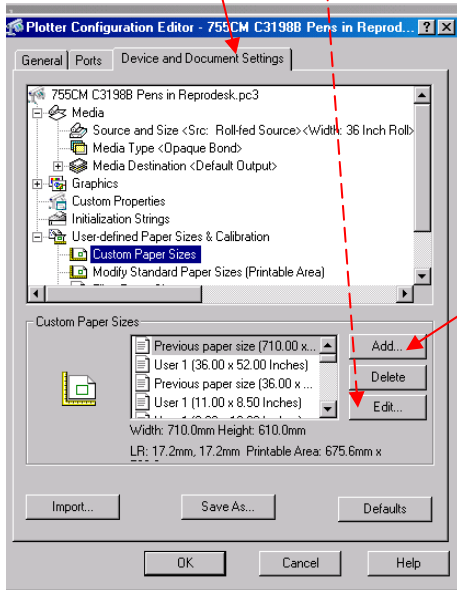
5. STILL ON THE "PLOT SETTINGS TAB", DETERMINE THE PAPER SIZE FOR THE PLOT, THEN GO TO THE "PAPER SIZE " PULL DOWN MENU, IF YOUR REQUIRED SIZE IS THERE, SKIP STEPS 6 – 8.



6. ADDING CUSTOM PAPER SIZES. RETURN TO THE PLOT DEVICE TAB AND SELECT PROPERTIES BUTTON NEXT THE PRINTER SELECTION.

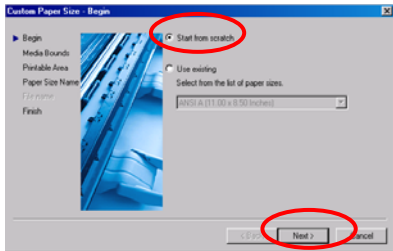


7. SELECT “DEVICE AND DOCUMENT SETTINGS”, TAB AND SELECT CUSTOM PAPER SIZE. THEN SELECT “ADD” BUTTON. (TO EDIT EXISTING PAPER SIZE CLICK THE EDIT BUTTON)

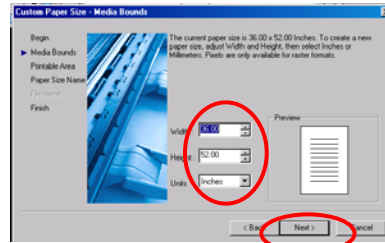


8. FOLLOW THE STEPS IN THE WIZARD:

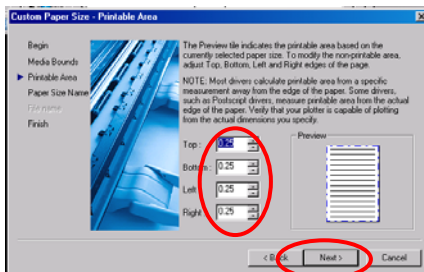
A. SELECT “START FROM SCRATCH” CLICK NEXT
CLICK NEXT.



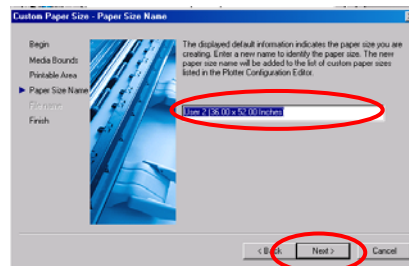
B. ENTER YOUR NEW PAPER SIZE IN BLANKS,



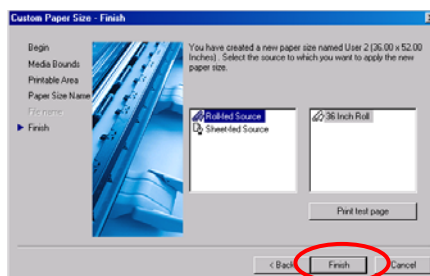
C. SET ALL MARGINS TO “0”, CLICK NEXT.
NEXT.



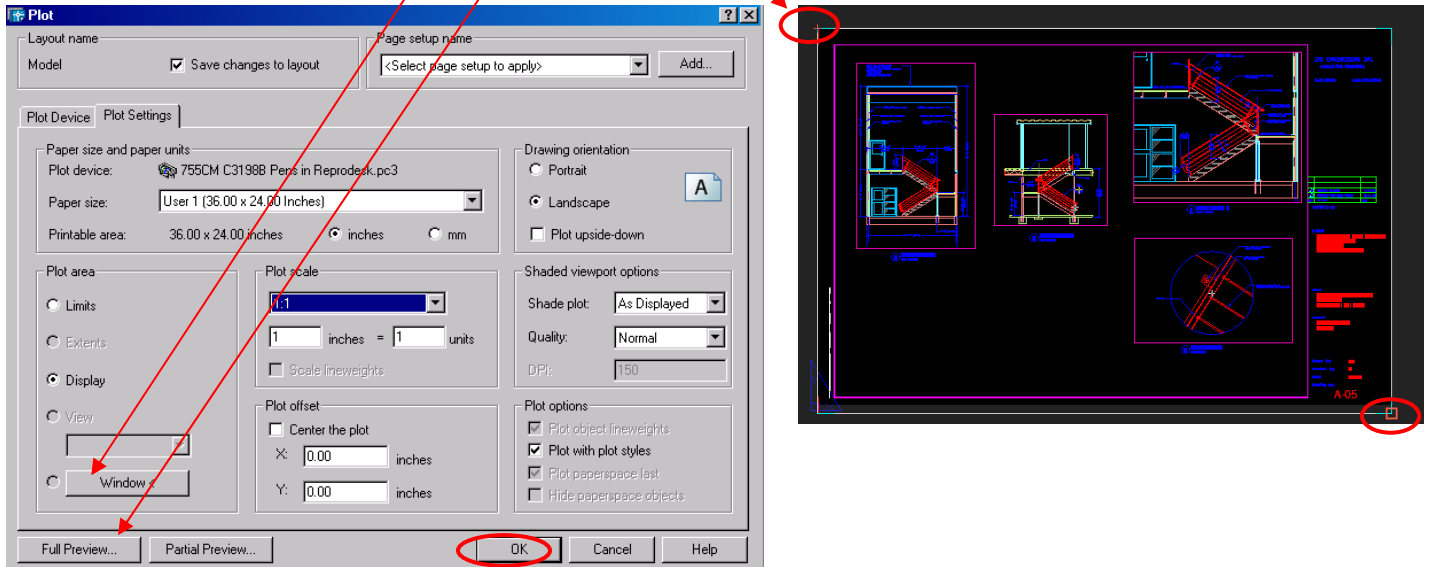
D. ENTER NAME OF CUSTOM PAPER SIZE, CLICK



E. CLICK FINISH



9. AFTER SELECTING PAPER SIZE CLICK THE WINDOW BUTTON, A WINDOW WILL OPEN SHOWING YOUR DRAWING. BEGINNING TOP LEFT, DRAW A WINDOW AROUND YOUR DRAWING ONCE THIS IS DONE, THE WINDOW WILL CLOSE. THEN CLICK THE “FULL PREVIEW” BUTTON. ONCE YOU ARE ASSURED THAT YOUR PLOT IS GOOD, HIT ESC. THIS WILL RETURN YOU TO THE PLOT DIALOGUE. CLICK “OK” YOUR FILE WILL PLOT AND SAVE IN THE DIRECTORY YOU SELECTED IN STEP 3.



THIS COMPLETES THE “PLT” FILE CREATION FOR SUBMISSION TO TRIANGLE REPROGRAPHICS USING AUTOCAD 2000 THROUGH 2004.