



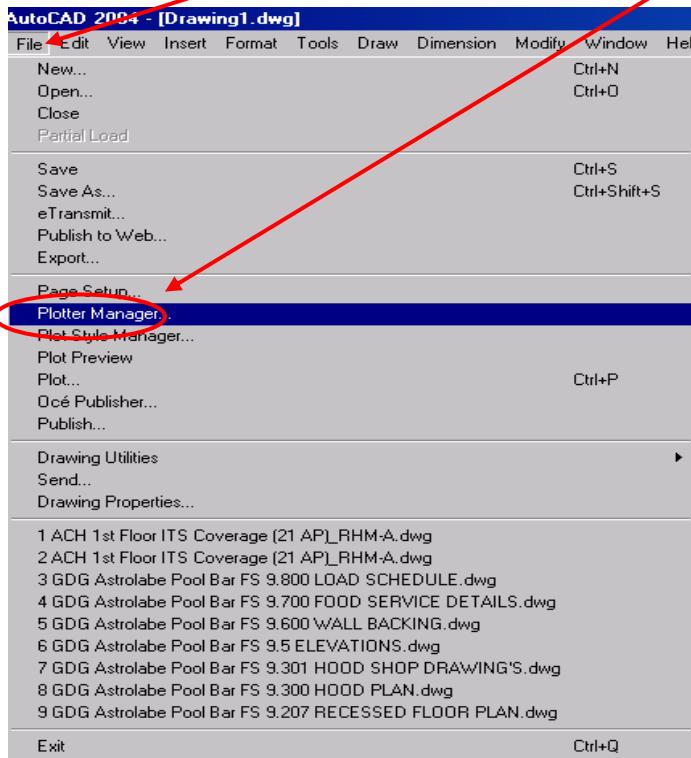
Instructions for Autocad 2000-2004

**HOW TO
ADD A PLOTTER
TO AUTOCAD
VERSIONS 2000-2004**

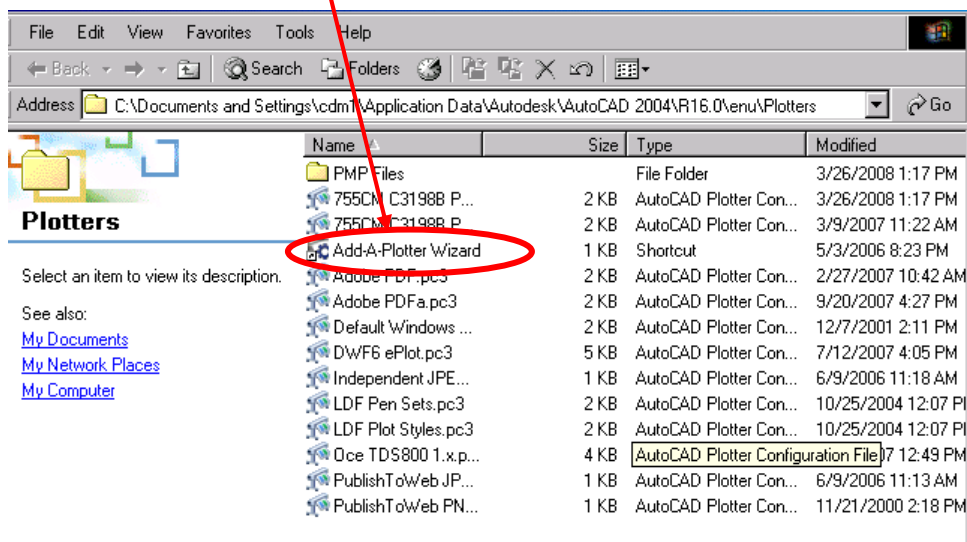


ADDING A PLOTTER TO AUTOCAD 2000-2004

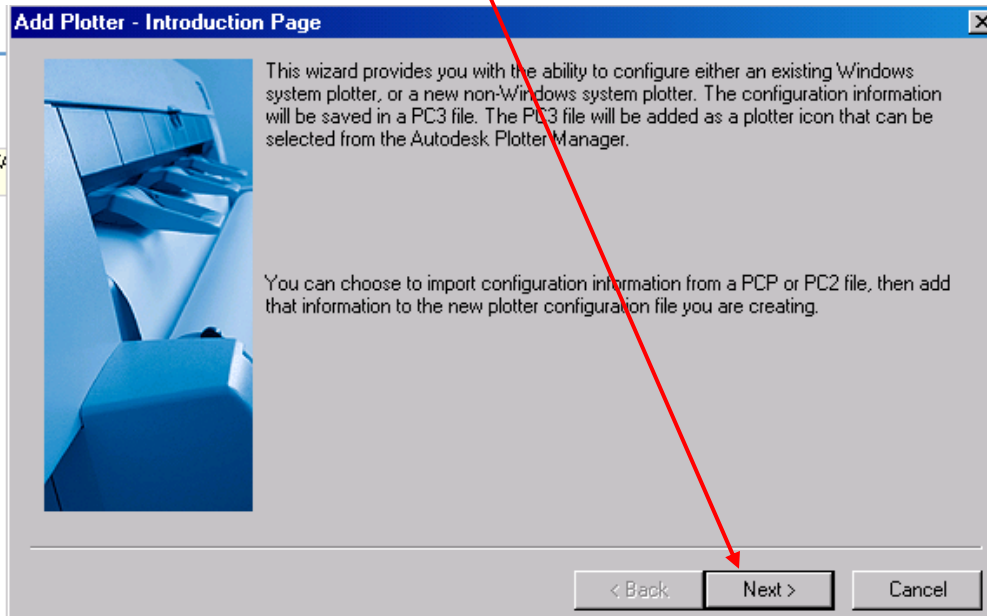
1. Open AutoCad go to file menu and select plotter manager.



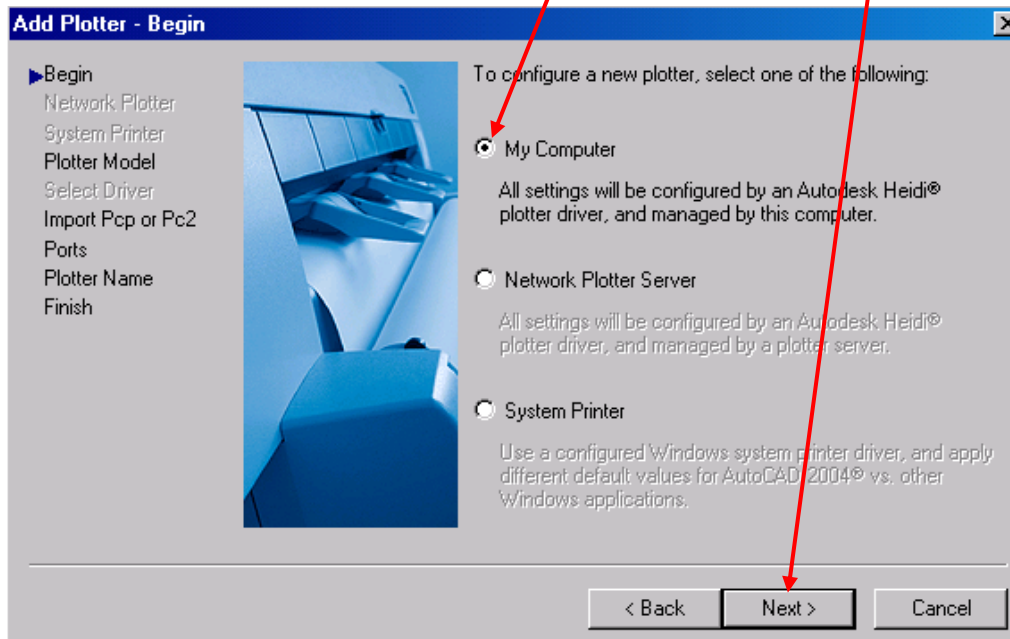
2. Select "Add a Plotter Wizard" in the plot manager folder. Double click to open wizard



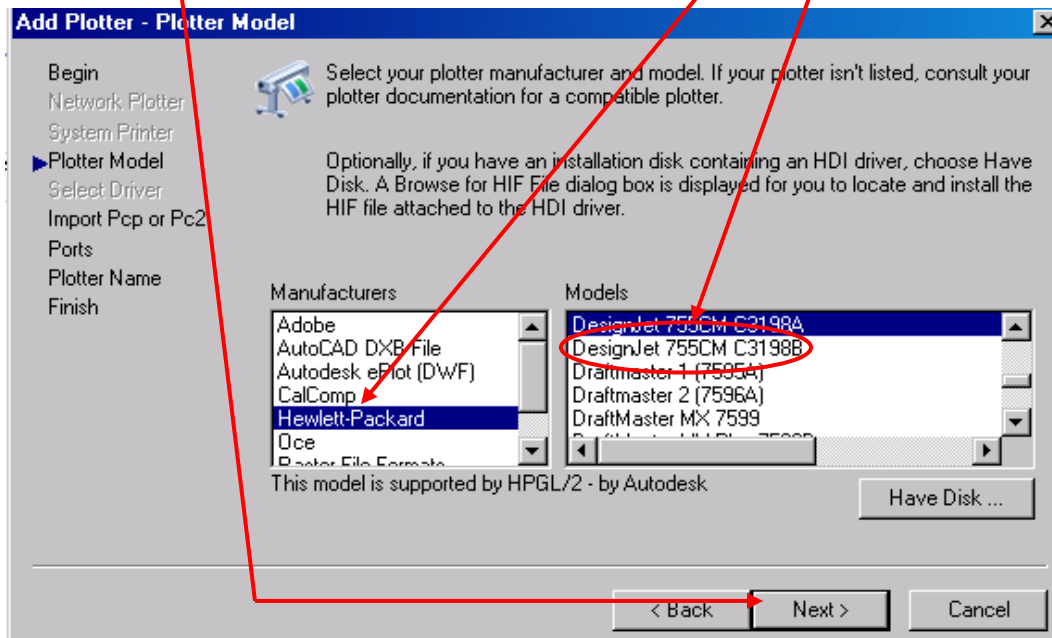
3. Introductory page just click next.



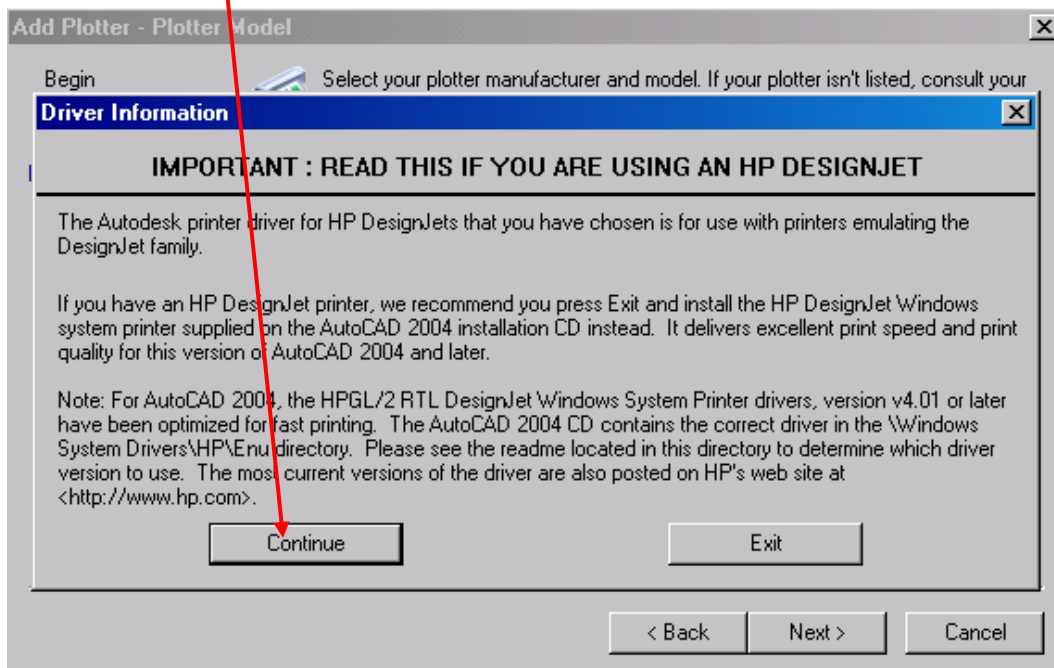
4. When you get this screen, select "My Computer", then select next.



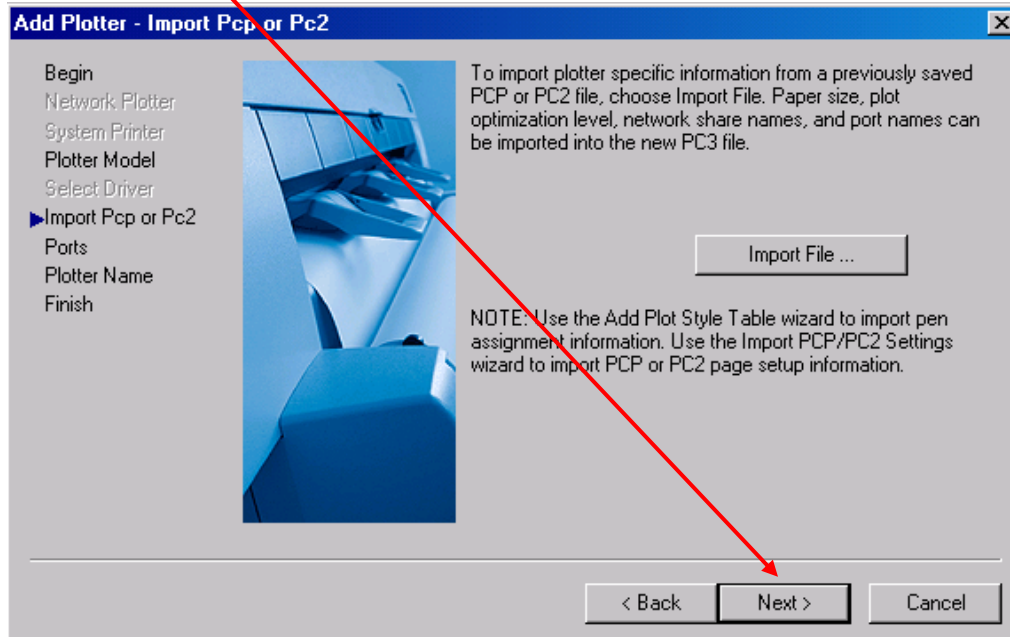
5. On the “Add Plotter – Plotter Model” window, select “Hewlett Packard” from the Manufacturers Window, and DesignJet 755cm C3198B. Then select next.



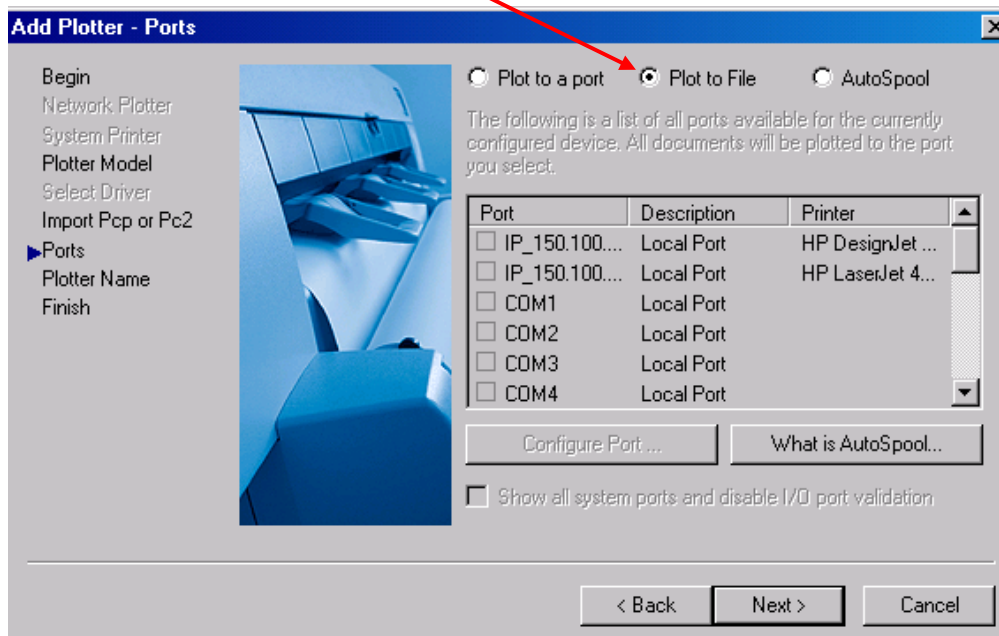
6. Click “Continue” on Driver “Information” menu.



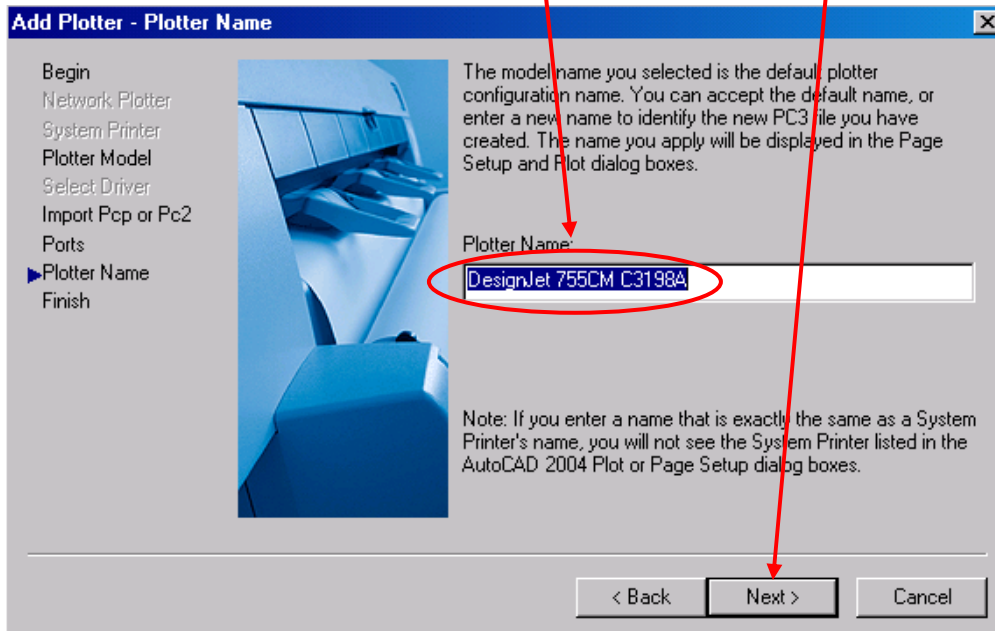
7. Click next on the “Add Plotter –Import Pcp or Pc2” screen.



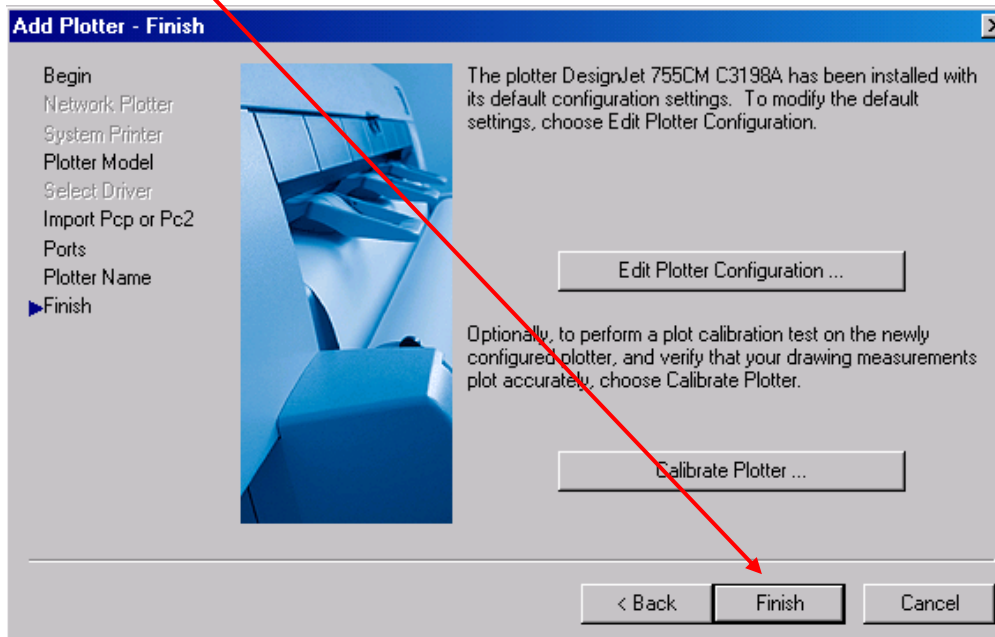
8. Select “Plot to File” on the “Add Plotter – Ports” Screen.



9. Name the plotter "Triangle Designjet 755cm Pens in Autocad", or you may use the name of your choice if you wish, then select next.



10. Click Finish, you have now successfully added a plotter to your AutoCAD.



YOU HAVE NOW CREATED A PLOTTER FOR PRINTING AT TRIANGLE.