



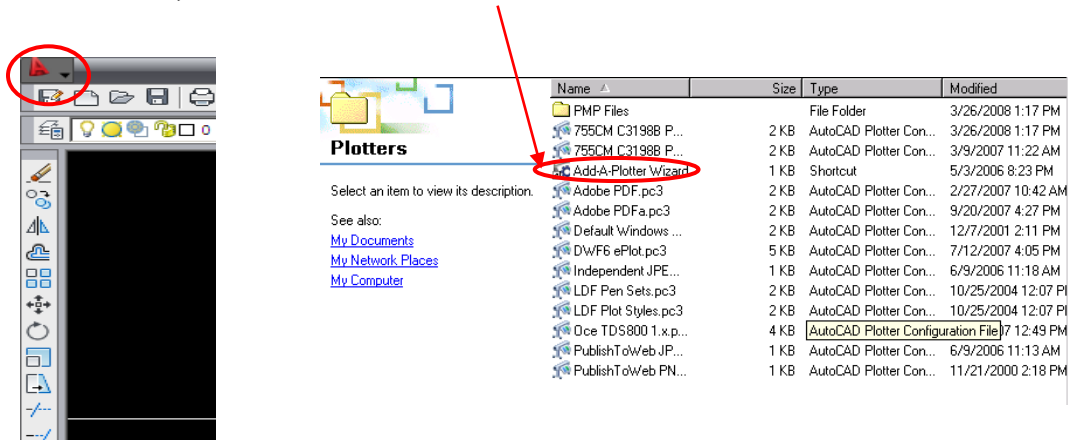
Instructions for Autocad 2010-2011

HOW TO ADD A PLOTTER TO AUTOCAD VERSIONS 2010-2011

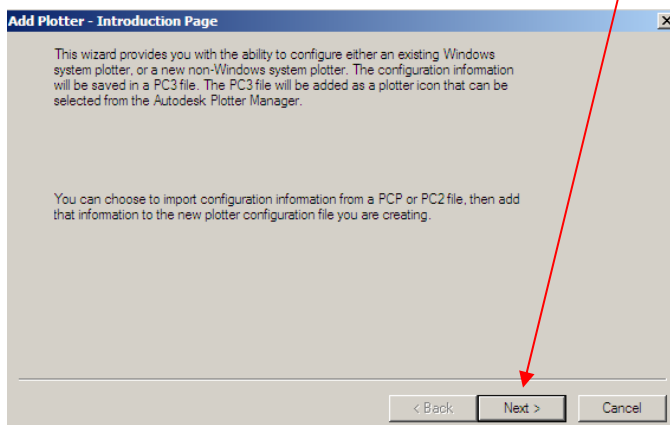


How to “ADD A PLOTTER” TO AUTOCAD 2010-2011

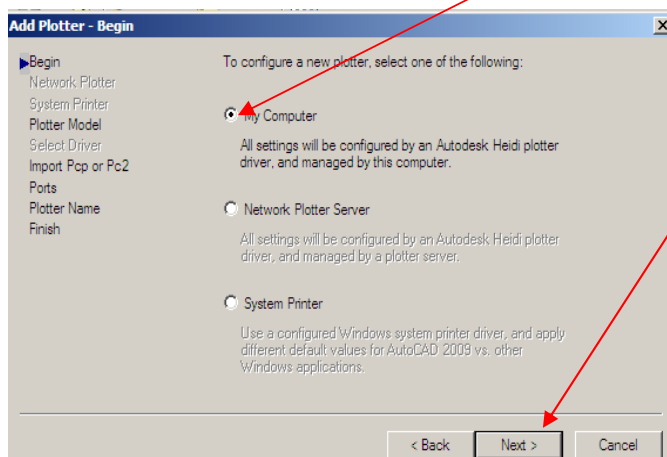
1. SELECT “PLOTTER MANAGER” FROM FILE MENU PULL DOWN. THE MENU BAR IN 2010 AND 2011 IS HIDDEN AND CAN BE FOUND BY LOCATING THE RED “A” ON THE TOP LEFT OF THE ACAD WINDOW AND CLICKING ON THE DOWN ARROW NEXT TO IT. WHEN THIS WINDOW OPENS, DOUBLE CLICK “ADD A PLOTTER WIZARD” TO START THE INSTALLATION.



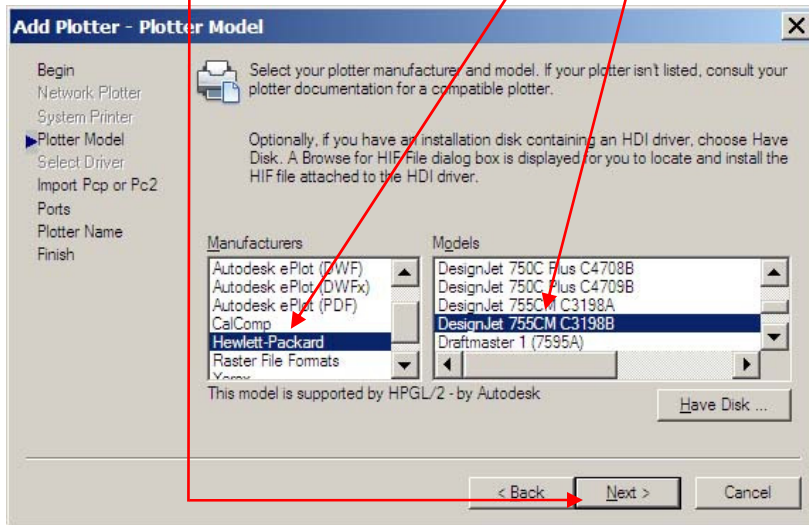
2. SELECT NEXT FROM ADD A PLOTTER INTRODUCTION DIALOGUE.



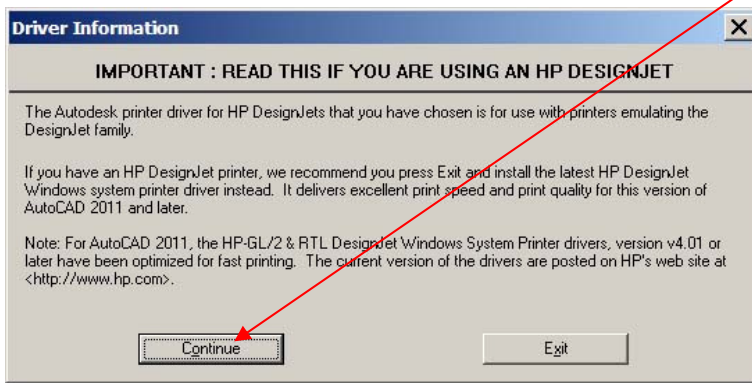
3. ON “ADD PLOTTER – BEGIN” SELECT “MY COMPUTER”, CLICK NEXT.



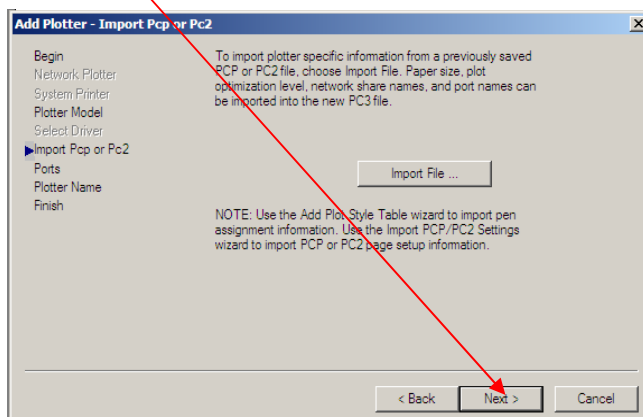
4. FROM "PLOTTER MODEL" SCREEN, SELECT "HEWLETT PACKARD" FROM THE MANUFACTURER BLOCK AND "DESIGNJET 755CM C3198B" FROM MODELS BLOCK. CLICK NEXT.



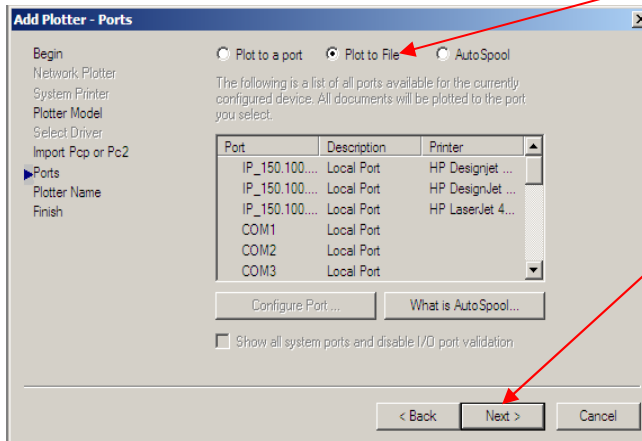
5. WHEN "DRIVER INFORMATION" WARNING APPEARS CLICK "CONTINUE".



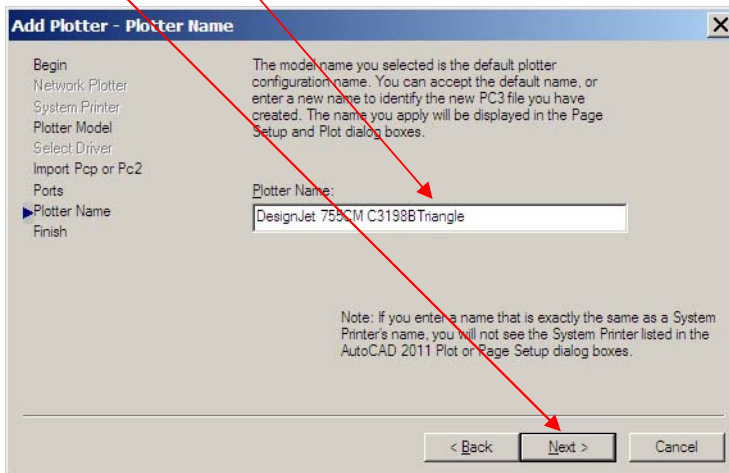
6. CLICK NEXT ON THE "ADD PLOTTER - IMPORT PCP OR PC2" SCREEN.



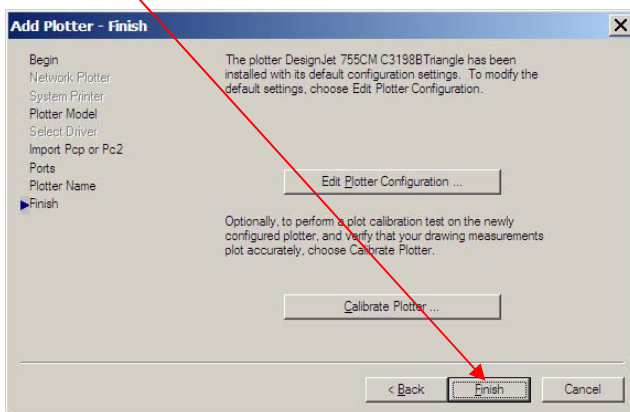
7. ON THE “ADD PLOTTER - PORTS” SCREEN SELECT “PLOT TO FILE”, CLICK NEXT.



8. ENTER “TRIANGLE” AFTER DESIGNJET 755 CM C3198B IN “ADD PLOTTER - PLOTTER NAME” WINDOW, (YOU MAY ENTER YOUR OWN PRINTER IDENTIFIER HERE IF YOU WISH.) CLICK NEXT.



9. CLICK FINISH



YOU HAVE NOW CREATED A PLOTTER FOR PRINTING AT TRIANGLE.